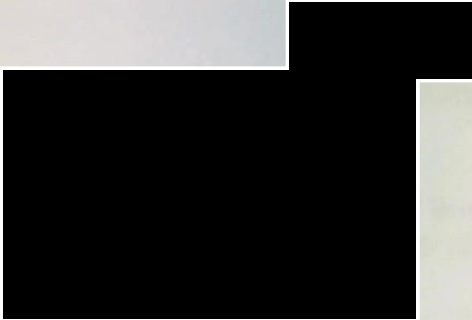




**BRENTWOOD  
BOROUGH COUNCIL**



Date: 2nd February 2018

Dear Sir/Madam

## **BRENTWOOD DRAFT LOCAL PLAN: PREFERRED SITE ALLOCATIONS CONSULTATION**

The Council is preparing a new Local Plan for the Borough. This document will provide the vision, objectives and policies to guide future development in the Borough.

You may be aware of previous consultations that we have held as preparation of the Local Plan progresses. I write to inform you that the Council is now undertaking further public consultation following additional site assessment work to meet the Borough's future housing and employment needs. Residents, local businesses, and other stakeholders are invited to read the document and respond with their views.

### **How Do I Comment?**

The consultation document and supporting documents are available for public consultation for six weeks from Monday 29 January to Monday 12 March 2018.

You can respond directly online at our website [www.brentwood.gov.uk/localplan](http://www.brentwood.gov.uk/localplan)

Following online links to the 'Local Plan Consultation Portal' is the quickest and easiest way to comment.

Alternatively, you can respond by completing a comment form, available from our new temporary reception at 1-2 Seven Arches Road, Brentwood (next to the Town Hall), or download from our website, and return to us.

Email us at: [planning.policy@brentwood.gov.uk](mailto:planning.policy@brentwood.gov.uk)

Write to us at: Planning Policy Team, Brentwood Borough Council, Town Hall,  
Brentwood, Essex, CM15 8AY

## Public Drop-In Events

Officers will be available to answer questions at public events during the consultation period. The dates and locations of these events will be available to view on the Council's website at [www.brentwood.gov.uk/localplan](http://www.brentwood.gov.uk/localplan)

## More Information

For more information on the Preferred Site Allocations consultation document please visit our website at [www.brentwood.gov.uk/localplan](http://www.brentwood.gov.uk/localplan)

Our website includes details on previous consultations and technical evidence studies that inform the Local Plan process, such as the Interim Sustainability Appraisal (SA).

Should you have any questions about the consultation please contact the Planning Policy Team on 01277 312620 or email [planning.policy@brentwood.gov.uk](mailto:planning.policy@brentwood.gov.uk).

Yours faithfully



**Phil Ruck**

Chief Executive

Brentwood Borough Council

Dear Mr Ruck,

If all goes well, I will be leaving this over the top Borough. I will be moving back to Haunchurch which I left several years ago. Having Council's Park better run. Living here in Warley is like living in the "outback" I have never lived in a Carpark Five days a week, through living near the Office Complex just up the Road. Hammonds lane is not cleaned as it should be, because parking on the kerbs. Mechanised Cleaner is sent here for what reason? Fat holes in the road have been here for years. Pavements require resurfacing. The Shrubbery on the Corner of Warley Hill near the Hairdressers is a disgrace, numerous amount of people have Complained about it to no avail. If you ring the Officers in Eagle Way to Complain you simply get no where. Speaking with my Property Tax Hat on I would say this Department needs to be told who pays their Salaries. In Conclusion the Parking Spaces in Brentwood High Street are protruding and Crocked.